

EFFECTIVE MARCH 2026

# How to **PLAY** the games



# IALottery®

Woo Hoo for You®

For official rules and complete details, visit [ialottery.com](http://ialottery.com)

# Table of Contents

What is a WIN-onaire? .....	<u>4</u>
Tips for Player Security .....	<u>5</u>
How to Play: Powerball® .....	<u>6</u>
How to Play: Mega Millions® .....	<u>8</u>
How to Play: Lotto America® .....	<u>10</u>
How to Play: Millionaire for Life™ .....	<u>12</u>
Iowa Lottery VIP Club .....	<u>14</u>
How to Play: Pick 3 .....	<u>16</u>
How to Play: Pick 4 .....	<u>18</u>
How to Play: InstaPlay.....	<u>20</u>
How to Play: Scratch Games .....	<u>22</u>
How to Play: Pull-tabs.....	<u>23</u>
Check Winning Numbers .....	<u>24</u>
Iowa Lottery App.....	<u>24</u>
Claim Deadlines .....	<u>25</u>
Claiming Prizes .....	<u>25</u>
Problem Gambling Resources .....	<u>26</u>
Contact Information.....	<u>28</u>



## About Us

Since the Iowa Lottery's start in 1985, its profits have helped make Iowa a better place to live, work and raise a family. The Iowa Lottery provides entertainment and prizes to its players while at the same time raising billions of dollars for the state programs that benefit all Iowans.

Today, lottery proceeds help our state in multiple ways: Iowa veterans and their families through the Iowa Veterans Trust Fund, the families of fallen Iowa peace officers, firefighters and corrections employees, and provide help for a variety of significant projects for education, parks and conservation, agriculture, and human services through the state General Fund.

To date, the Iowa Lottery has raised more than \$2.6 billion.

For that, the Iowa Lottery thanks its players.

When you play the Lottery, Iowa wins.

*Iowa Lottery is a division of the Iowa Department of Revenue.*



*Click  
to learn more*

*Meet  
CEO*

**Matt Strawn**



Matt Strawn has served as CEO of the Iowa Lottery since January 2019. He is an Iowa native and business entrepreneur who takes great pride in leading an Iowa organization that is making a difference in his home state.

He was raised on his family's farm in Benton County before graduating from the University of Iowa in 1996 and earning his law degree in 2003 from the Columbus School of Law at the Catholic University of America.

Matt's career in public service and private enterprise includes: serving as a senior congressional advisor, leading and helping bring a minor league professional sports franchise to Des Moines, and co-founding a successful regional public affairs firm.

# WHAT IS A WIN-IONAIRE?

When it comes to winning the lottery, it's easy to get excited about a life-changing jackpot.

But what about the \$20 pull tab prize that prompts you to pick up the lunch tab? Or the \$200 payout you use to treat yourself to a blowout? What about that breathless pause as you begin revealing the first prize on a scratch ticket?

These are all the moments that make someone a WIN-ionaire. Because being "rich" isn't just about commas in a bank account. It's the feeling that comes from playing—and winning—your way. It's about turning anticipation into excitement, and prizes into stories you'll tell for a lifetime.

You might not win enough cash to be wealthy forever, but for that moment, you feel confident, carefree and just a little bit like a baller. And that feeling? That's what being a WIN-ionaire is all about.



**That's why we say no matter what, where or how you play, you can be a WIN-ionaire with the Iowa Lottery today!**



*Click*  
to learn more

## TIPS FOR PLAYER SECURITY

Debit = ✓ Credit = ✗

- Debit cards **can** be used in Iowa to purchase lottery tickets.
- Credit cards **cannot** be used in Iowa to purchase lottery tickets - **it is prohibited by law.**

### Double-Check Your Tickets

- **Lotto games:** Ensure the lotto ticket is for the game you wanted and that it contains the right numbers and drawings.
- **Scratch Games:** The scratch coating should be intact and should cover the entire play area, including the "Scratch 2 Cash" area.
- **InstaPlay:** The date and time the ticket was printed should match the purchase date
- **Vending Kiosk:** Tickets should come out as one ticket and not part of two tickets.
- **Pull-Tabs:** The perforations along the paper tabs should not be broken.

### Don't Forget Your Receipt

After you've determined if your ticket has won a prize, an easy way to verify the results is to get a receipt every time you have a ticket checked or cashed at a lottery terminal in Iowa.

### Don't Fall For Lottery Scams

- One technique scammers use to steal your money is impersonating lotteries.
- The only lottery that can operate in Iowa is the Iowa Lottery.
- Unless you specifically enter an Iowa Lottery promotion or contest, we will **never** contact you to inform you that you've won a prize.

And always  
*Sign* your  
winning ticket!

*If you ever have a concern about Iowa Lottery products or operations, please call us at (515) 725-7900 or e-mail us at [wmaster@ialottery.com](mailto:wmaster@ialottery.com).*

- **Game Type:** Multi-State Draw Game
- **Drawing Schedule:** Drawings are held Mondays, Wednesdays and Saturdays at 9:59 p.m. Tickets may be purchased in Iowa until 8:59 p.m. on the evening of the drawing.
- **Jackpot:** The starting jackpot and the rate at which the jackpot increases is based upon sales and interest rates, with no fixed minimums.
- **Price:** Plays cost \$2, plus an extra \$1 per play if **Power Play**® is chosen, plus an extra \$1 per play if the **Double Play**® is chosen.
- **Prize Range:** Starts at \$4.
- **Claim Deadlines:** Players have 180 days from the date of the drawing to claim a prize.
- **Overall odds:** 1 in 24.87.

## • Play Slips

- 1 Choose 5 of 69 numbers for the white balls.
- 2 Choose 1 of 26 numbers for the **Powerball**®.
- 3 Power Play and/or Double Play may be chosen by marking the boxes. Power Play is for a chance to multiply your non-jackpot winnings by 2, 3, 4, 5 or 10 times (*10X multiplier is used only when the jackpot is \$150 million or less*). Double Play is for another chance to win with the same set of numbers in two drawings rather than just one.
- 4 Select the multi-draws to use the current selected numbers for multiple consecutive drawings, if so desired.



Full instructions are located on the back of the slips. You can also select numbers using the LotteryPlus app (page 24), ask for an Easy Pick for the store clerk or use a lottery kiosk to select your numbers.

MATCH	PRIZE*	PRIZE W/ POWER PLAY**	ODDS 1 IN:
5 + PB	JACKPOT	JACKPOT	292,201,338.00
5	\$1 million	\$2 million	11,688,053.52
4 + PB	\$50,000	Up to \$500,000	913,129.18
4	\$100	Up to \$1,000	36,525.17
3 + PB	\$100	Up to \$1,000	14,494.11
3	\$7	Up to \$70	579.76
2 + PB	\$7	Up to \$70	701.33
1 + PB	\$4	Up to \$40	91.98
Powerball	\$4	Up to \$40	38.32

Ask for **Powerball Play 'Em All** to receive 26 plays for \$52 in Powerball, one for each of the 26 Powerball numbers available in one drawing. You will be guaranteed to match the Powerball once and win at least a \$4 prize.

MATCH	PRIZE W/ DOUBLE PLAY	ODDS 1 IN:
5 + PB	\$10 million	292,201,338.00
5	\$500,000	11,700,000.00
4 + PB	\$50,000	913,129.18
4	\$500	36,525.10
3 + PB	\$500	14,494.10
3	\$20	579.76
2 + PB	\$20	701.33
1 + PB	\$10	91.98
Powerball	\$7	38.32

**Click** to learn more about Powerball®

\*The advertised jackpot is based on prize payment as an annuity. The jackpot prize will be divided equally among multiple winners based on the amount available to the lottery for the jackpot prize pool. The set prize amounts published here are based on the expected number of winners sharing in the prize pool. In some cases, these prizes may be paid on a pari-mutuel basis and will be lower than these prizes levels. \*\*If the Power Play option is purchased, prize(s) won increase 2, 3, 4, 5 or 10 times depending on the multiplier number for that drawing. 10X multiplier is used only when the jackpot is \$150 million or less. The Match 5 prize will be \$2 million with the Power Play unless pari-mutuel. Jackpot prizes are not eligible for the Power Play option.

# How to PLAY



## • Game Type:

Multi-State Draw Game

• **Drawing Schedule:** Drawings are held Tuesdays and Fridays at 10:00 p.m. Tickets may be purchased in Iowa until 8:59 p.m. on the evening of the drawing.

• **Jackpot:** Starts at \$50,000,000. The rate at which the jackpot increases is based upon sales and interest rates.

• **Price:** Plays cost \$5, multiplier is included.

• **Prize Range:** Starts at \$10.

• **Claim Deadlines:** Players have 180 days from the date of the drawing to claim a prize.

• **Overall odds:** 1 in 23.07.

• **Built-In Multiplier Feature:** The Multiplier feature is now included in the price of a single \$5 wager. Players multiply non-jackpot wins by 2x up to 10x on every play. Individual multiplier (2x, 3x, 4x, 5x, or 10x) will be randomly assigned at time of purchase.

MATCH	PRIZE*	ODDS 1 IN:
5 + MB	JACKPOT	290,472,336.00
5	\$2M - \$10M	12,629,232.00
4 + MB	\$20k - \$100k	893,761.03
4	\$1k - \$5k	38,859.18
3 + MB	\$400 - \$2k	13,965.02
3	\$20 - \$100	607.17
2 + MB	\$20 - \$100	665.00
1 + MB	\$14 - \$70	86.81
Mega Ball	\$10 - \$50	35.17

MULTIPLIER	FREQUENCY	ODDS 1 IN:
10X	1	32.00
5X	2	16.00
4X	4	8.00
3X	10	3.20
2X	15	2.13

Total field of: 32. Average Multiplier value is 3.

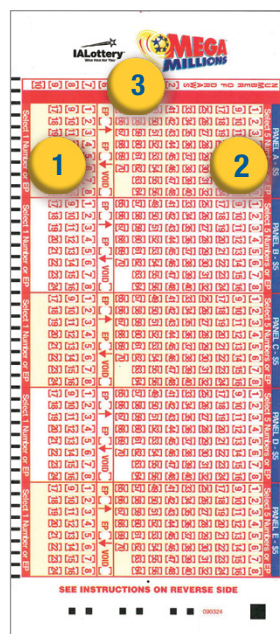
## • Play Slips

1 Choose 5 of 70 numbers for the white balls.

2 Choose 1 of 24 numbers for the **Mega Ball®**.

3 Play more than one drawing by marking the "Number of Draws" box on the play slip for up to 10 consecutive drawings.

Full instructions are located on the back of the slips. You can also select numbers using the LotteryPlus app (page 24), ask for an Easy Pick for the store clerk or use a lottery kiosk to select your numbers.



**The New Mega Millions launched in April 2025. With the new structure, players can expect faster-growing jackpots, better odds and bigger wins.**

Ask for **Mega Millions Play 'Em All** to receive 24 plays for \$120 in Mega Millions, one for each of the 24 Mega Ball numbers available in one drawing. You will be guaranteed to match the Mega Ball once and win at least a \$10 prize.



**Click**  
to learn more about  
Mega Millions®

\*The jackpot prize will be divided equally among multiple winners based on the amount available in the game's jackpot prize pool. The game's total prize pool is estimated to be 55% of Mega Millions sales, but may be higher or lower based upon the number of winners at each guaranteed prize level, as well as the funding required to meet the official advertised jackpot. The official Mega Millions grand prize annuity amount is subject to change based on sales forecasts and/or actual sales. Reminder: The multiplier does not apply to the jackpot. The set prize amounts published here are based on the expected number of winners sharing in the prize pool. For any drawing, if prize liability exceeds the percentage of the prize pool allocated to the set prize levels, then all prizes except the jackpot prize may become pari-mutuel and would be lower than these prize levels.

# How to PLAY



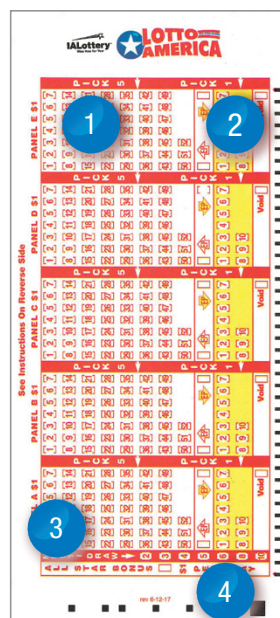
- **Game Type:** Multi-State Draw Game
- **Drawing Schedule:** Drawings are held Mondays, Wednesdays and Saturdays at 9:15 p.m. Tickets may be purchased in Iowa until 8:59 p.m. on the evening of the drawing.
- **Jackpot:** The starting jackpot and the rate at which the jackpot increases is based upon sales and interest rates, with no fixed minimums.
- **Price:** Plays cost \$1, plus an extra \$1 per play if **ALL STAR BONUS®** is chosen.
- **Prize Range:** Starts at \$2.
- **Claim Deadlines:** Players have 180 days from the date of the drawing to claim a prize.
- **Overall odds:** 1 in 9.63.

MATCH	PRIZE*	PRIZE W/ ALL-STAR BONUS**	ODDS 1 IN:
5 + SB	JACKPOT	JACKPOT	25,989,600.00
5	\$20,000	Up to \$100,000	2,887,733.33
4 + SB	\$1,000	Up to \$5,000	110,594.04
4	\$100	Up to \$500	12,288.23
3 + SB	\$20	Up to \$100	2,404.22
3	\$5	Up to \$25	267.14
2 + SB	\$5	Up to \$25	160.28
1 + SB	\$2	Up to \$10	29.14
Star Ball	\$2	Up to \$10	16.94

**Cash Option vs. Annuity Option for Powerball, Mega Millions, Lotto America:** The jackpot prize will be divided equally among multiple winners based on the amount available for the jackpot prize pool. When a player wins the a jackpot, they can choose to receive the prize in annuity payments over time or take a lump-sum payment. A player has 60 days from the date they claim their prize in Iowa to choose the cash or annuity option. If the player selects the cash option, they will receive a single payment equal to the amount available in the jackpot prize pool from the sale of tickets in the game. If the player chooses the annuity option, the prize will be paid in 30 payments over 29 years. The annual payment will increase by 5 percent to accommodate for factors such as inflation. If the cost to purchase the annuity is less than \$250,000, the lottery may elect to pay the prize as "cash."

## • Play Slips

- 1 Choose 5 out of 52 numbers for the white balls.
- 2 Choose 1 out of 10 numbers for the **Star Ball®**.
- 3 Play more than one drawing by marking the "multi-draw" box on the play slip for 2, 3, 4, 5, 6, 8 or 10 consecutive drawings.
- 4 For a chance to multiply your non-jackpot winnings two to five times, choose the **All Star Bonus** by marking the All Star Bonus box. A multiplier is chosen randomly during each Lotto America drawing. If a "5" is drawn as the multiplier, each prize except the jackpot would be multiplied by 5. In that case, if you matched 5 white balls, you would win \$100,000 with the All Star Bonus!



Full instructions are located on the back of the slips. You can also select numbers using the LotteryPlus app (page 24), ask for an Easy Pick for the store clerk or use a lottery kiosk to select your numbers.

Ask for **Powerball Play 'Em All** to receive 10 plays for \$10 in Lotto America, one for each of the 10 Star Ball numbers available in one drawing. You will be guaranteed to match the Star Ball once and win at least a \$2 prize.



**Click**  
to learn more about  
Lotto America®

\*The advertised jackpot is based on prize payment as an annuity. The jackpot prize will be divided equally among multiple winners based on the amount available to the lottery for the jackpot prize pool.

\*\*The set prize amounts published here are based on the expected number of winners sharing in the prize pool. In some cases, these prizes may be paid on a pari-mutuel basis and will be lower than these prize levels.

# How to PLAY



- **Game Type:** Multi-State Draw Game
- **Drawing Schedule:** Drawings are held daily at approx. 10:15 p.m. Tickets may be purchased in Iowa until 8:59 p.m. each day.
- **Jackpot:** Win the top prize of \$1 million a year for life by matching all 5 white balls and the green Millionaire Ball™. The game's tier 2 prize for matching all five white balls without the Millionaire Ball is \$100,000 a year for life. Each prize is guaranteed a minimum payout for 20 years.
- **Price:** Plays cost \$5.
- **Prize Range:** Starts at \$8.
- **Claim Deadlines:** Players have 180 days from the date of the drawing to claim a prize.
- **Overall odds:** 1 in 8.47

MATCH	PRIZE	ODDS 1 IN:
5 + MB	\$1 million a year for life*	22,910,580.00
5	\$100,000 a year for life*	5,727,645.00
4 + MB	\$7,500	86,455.02
4	\$500	21,613.76
3 + MB	\$250	1,662.60
3	\$50	415.65
2 + MB	\$25	97.80
2	\$8	24.45
1 + MB	\$8	15.65

\*The set prize amounts published here are based on the expected number of winners sharing in the prize pool. In some cases, these prizes may be paid on a pari-mutuel basis and will be lower than these prize levels.

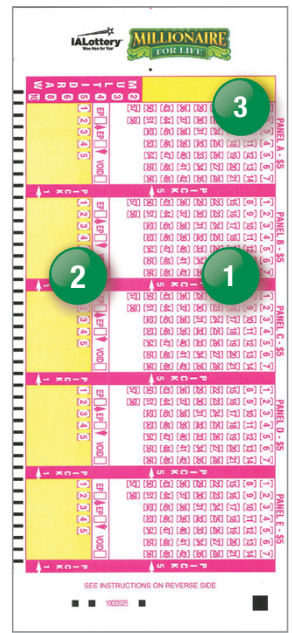


Click to learn more about Millionaire for Life™

## • Play Slips

- 1 Choose 5 of 58 numbers for the white balls.
- 2 Choose 1 of 5 numbers for the **Millionaire Ball™**.
- 3 Play more than one drawing by marking the “Number of Draws” section on the play slip in the appropriate box for 2, 3, 4, 5, 6, 8 or 10 consecutive drawings.

Full instructions are located on the back of the slips. You can also select numbers using the LotteryPlus app (page 24), ask for an Easy Pick for the store clerk or use a lottery kiosk to select your numbers.



## • Cash Option vs. Annuity Option

TOP PRIZE		
WINNERS	ANNUITIZED PAYMENT OPTION	CASH OPTION
1	\$1 million a year for life	\$18,000,000
2-20	\$1 million a year for life divided**	Divided†
21 or more	No annuitized payment option	Divided†

TIER 2 PRIZE		
WINNERS	ANNUITIZED PAYMENT OPTION	CASH OPTION
1-20	\$100,000 a year for life	\$2,200,000
21 or more	No annuitized payment option	Divided†

\*\*A minimum annuitized prize value is \$50,000 per year for life.

†See game rules Section 6.C. *Prize Liability Limitation* at ialottery.com.

### Cash Option vs. Annuity Option for Millionaire for Life:

The minimum payment period for the top and second prizes is 20 years, and players have 60 days from the date they claim their prize to choose the cash option or the annuity option. More about these options can be found in the table above. Prizes that are governed by split-prize liability are divided equally among the winning tickets and may be less than shown. For rules and complete details visit [ialottery.com](http://ialottery.com).



The IA Lottery VIP Club™ offers our **VERY IMPORTANT PLAYERS** perks for being a member!



### Play It Again® Promotions

Be the first to know about second chance promotions! Enter eligible scratch, InstaPlay or lotto tickets into your account for another

chance at winning BIG prizes!

Each Play It Again promotion offers prizes ranging from cash and ticket events to once-in-a-lifetime experiences, like a trip to Hawaii!



### Prize Zone Promotions

These additional promotions give VIP Club members more opportunities to win! They are smaller, yet mighty!

### Pop-Up Contests

A contest that is **EXCLUSIVE** to members subscribed to receiving email communications and is completely **FREE** to enter, no purchase necessary! You never know when the next one may **POP UP!**

**Join now!  
IT'S FREE**

**CLICK  
HERE**

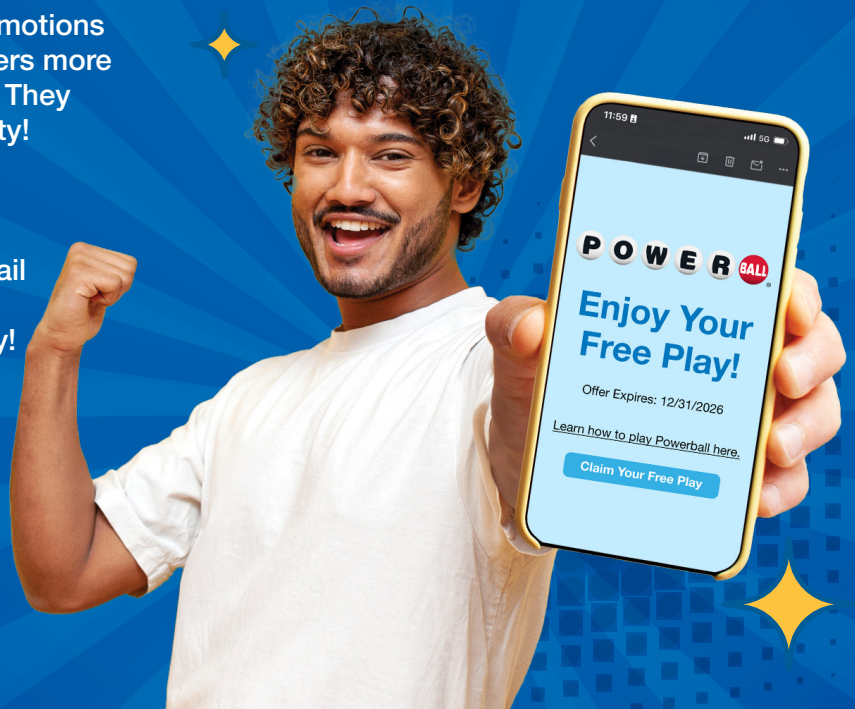


### Monthly e-Newsletter with Free Play

The most popular part of being a VIP Club member is the *VIP Connection* monthly e-newsletter. This newsletter contains Iowa Lottery news, promotions, and a **FREE** play coupon for lotto or InstaPlay games.

**The IA Lottery VIP Club is open to all players age 21+ and is free to join!**

**Join today at [ialottery.com/VIP](http://ialottery.com/VIP)**





- **Game Type:**  
Daily Draw Game
- **Drawing Schedule:** **Midday** drawings are held daily at 12:20 p.m. **Evening** drawings are held daily at 10 p.m. Tickets may be purchased until noon on the day of the drawing for midday drawings and until 9:40 p.m. on the day of the drawing for evening drawings.
- **Choose a set of four numbers, each from 0 through 9:** Use a play slip to choose your own numbers, request an Easy Pick from the clerk, or select Easy Pick on a lottery kiosk, and the lotto terminal or kiosk will choose the numbers for you. You can also do this using the LotteryPlus app (see Page 3). Play more than one drawing by marking the “Multi-draws” section on the play slip. Play up to 8 consecutive plays for either day or evening, or up to 16 consecutive plays for both day and evening.
- Select the **play type\***
- **Price:** The cost to play varies. 50¢ plays are available for Straight, Box, Front or Back Pairs. Play \$1, \$2, \$3, \$4 or \$5 for Straight, Box, Front or Back Pairs and Straight/Box.
- **Prize Range:** From \$30 to \$3,000.
- **Claim Deadlines:**  
Players have 90 days from the date of the drawing to claim a prize.

*PLAY TYPE	EXAMPLE	ODDS	PRIZE**
<b>Straight</b> (Match 3 numbers in exact order)	123	1 in 1,000	\$600
<b>3-Way Box</b> (Match 3 numbers, of which 2 are the same, in any order)	122	1 in 333	\$200
<b>6-Way Box</b> (Match 3 numbers in any order)	123	1 in 167	\$100
<b>3-Way Straight/Box Combo</b> (Play all 3 straight combos of 3 numbers, of which 2 are the same, match in any order)	122	1 in 333	\$100
<b>6-Way Straight/Box Combo</b> (Play all 6 straight combo of 3 numbers, match in any order)	123	1 in 167	\$50
<b>3-Way Straight/Box</b> (Match 3 numbers, of which 2 are the same, in exact order)	122	1 in 1,000	\$400
<b>6-Way Straight/Box</b> (Match 3 numbers in exact order)	123	1 in 1,000	\$350
<b>Front Pair</b> (Match the first two numbers in the EXACT ORDER as drawn)	12X	1 in 100	\$60
<b>Back Pair</b> (Match the last two numbers in the EXACT ORDER as drawn)	X23	1 in 100	\$60

\*\*Win prize structure is for a \$1 play for illustrative purposes. For complete play and prize structure, visit ialottery.com



- **Game Type:**  
Daily Draw Game
- **Drawing Schedule:** **Midday** drawings are held daily at 12:20 p.m. **Evening** drawings are held daily at 10 p.m. Tickets may be purchased until noon on the day of the drawing for midday drawings and until 9:40 p.m. on the day of the drawing for evening drawings.
- **Choose a set of four numbers, each from 0 through 9:** Use a play slip to choose your own numbers, request an Easy Pick from the clerk, or select Easy Pick on a lottery kiosk, and the lotto terminal or kiosk will choose the numbers for you. You can also do this using the LotteryPlus app (see Page 3). Play more than one drawing by marking the “Multi-draws” section on the play slip. Play up to 8 consecutive plays for either day or evening, or up to 16 consecutive plays for both day and evening.
- Select the **play type\***
- **Price:** The cost to play varies. 50¢ plays are available for Straight, Box, Front or Back Pairs. Play \$1, \$2, \$3, \$4 or \$5 for Straight, Box, Front or Back Pairs and Straight/Box.
- **Prize Range:** From \$30 to \$30,000.
- **Claim Deadlines:** Players have 90 days from the date of the drawing to claim a prize.

*PLAY TYPE	EXAMPLE	ODDS	PRIZE**
<b>Straight</b> (Match 3 numbers in exact order)	1234	1 in 10,000	\$6,000
<b>4-Way Box</b> (Match 4 numbers, of which 3 are the same, in any order)	1112	1 in 2,500	\$1,500
<b>6-Way Box</b> (Match 4 numbers, consisting of 2 pairs of identical numbers, in any order)	1122	1 in 1,667	\$1000
<b>12-Way Box</b> (Match 4 numbers, of which 2 are the same, in any order)	1123	1 in 833	\$500
<b>24-Way Box</b> (Match 4 numbers in any order)	1234	1 in 417	\$250
<b>4-Way Straight/Box Combo</b> (Play all 4 straight combos of 4 numbers, of which 3 are the same, match in any order)	1112	1 in 2,500	\$750
<b>6-Way Straight/Box Combo</b> (Play all 6 straight combos of 4 numbers, consisting of 2 pairs of identical numbers, match in any order)	1122	1 in 1,667	\$500
<b>12-Way Straight/Box Combo</b> (Play all 12 straight combinations of 4 numbers, of which 2 are the same, match in any order)	1123	1 in 833	\$250
<b>24-Way Straight/Box Combo</b> (Play all 24 straight combinations of 4 numbers match in any order)	1234	1 in 417	\$125
<b>4-Way Straight/Box</b> (Match 4 numbers, of which 3 are the same, in exact order)	1112	1 in 10,000	\$3,750
<b>6-Way Straight/Box</b> (Match 4 numbers, consisting of 2 pairs of identical numbers, in exact order)	1122	1 in 10,000	\$3,500
<b>12-Way Straight/Box</b> (Match 4 numbers, of which 2 are the same, in exact order)	1123	1 in 10,000	\$3,250
<b>24-Way Straight/Box</b> (Match 4 numbers in exact order)	1234	1 in 10,000	\$3,125
<b>Front Pair</b> (Match the first two numbers in the EXACT ORDER as drawn)	12XX	1 in 100	\$60
<b>Back Pair</b> (Match the last two numbers in the EXACT ORDER as drawn)	XX34	1 in 100	\$60

\*\*Win prize structure is for a \$1 play for illustrative purposes. For complete play and prize structure, visit ialottery.com

- **Game Type:** Instant Ticket aka "Scratchless Scratch Game"
- **Price Range:** From \$1 to \$30 depending on game.
- **Prize Range:** Varies by game.
- **Claim Deadlines:** Players have 90 days from the date of the ticket purchase to claim a prize.
- **Overall odds:** Varies by game.
- **How to buy:** InstaPlay tickets are printed right at the Iowa Lottery terminal when you buy them. Listen for the "cha-ching" sound so you know your ticket was just printed.

- **Jackpot:** The jackpot begins at a set minimum value then grows with each ticket sold until someone wins. The jackpot amount that applies to your InstaPlay ticket will be listed at the top of your ticket.
- **How to win:** A single ticket holder is awarded the entire jackpot, minus applicable taxes.
- **Other prizes:** You can win other prizes besides the jackpot on progressive games, too, so be sure to check your ticket carefully.

## How is InstaPlay different from other terminal games?

- ❌ Playslips
- ❌ Drawing Schedule
- ✅ Instant Prizes



Click to learn more about InstaPlay

# How to PLAY SCRATCH GAMES

IA Lottery

- **Game Type:** Scratchable ticket.
- **Price Range:** From \$1 to \$50 depending on game.
- **Prize Range:** Varies by game.
- **Claim Deadlines:** Prize redemption deadlines vary by official game end date of each game. Players have 90 days from that end date to redeem prizes. See [ialottery.com](http://ialottery.com) for details.
- **Overall odds:** Varies by game. Odds are determined by dividing the total number of tickets by the number of winning tickets in a game. Overall odds of winning on a scratch ticket apply to each ticket released and purchased in a game, not a series of tickets purchased by an individual player. For security purposes, winning tickets are randomly distributed, with no way to predict when or where one will come up next.
- **How to buy:** Availability vary by retailer.



Click  
to learn more about  
Scratch Games

# How to PLAY PULL-TABS

IA Lottery  
Pull-tabs

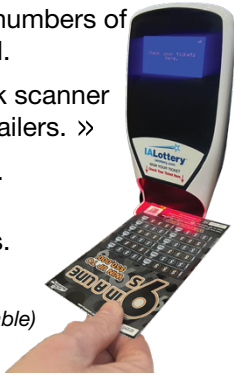
- **Game Type:** Perforated tabs.
- **Price Range:** From \$1 to \$5 depending on game.
- **Prize Range:** Varies by game.
- **Claim Deadlines:** Prize redemption deadlines vary by official game end date of each game. Players have 90 days from that end date to redeem prizes. See [ialottery.com](http://ialottery.com) for details.
- **Overall odds:** Varies by game. Odds are determined by dividing the total number of tickets by the number of winning tickets in a game. Overall odds of winning on a pull-tab apply to each ticket released and purchased in a game, not a series of tickets purchased by an individual player. For security purposes, winning tickets are randomly distributed, with no way to predict when one will come up next.
- **How to buy:** Availability vary by retailer.



Click  
to learn more  
about Pull-tabs

## ARE YOU A WINNER?

1. [ialottery.com](http://ialottery.com) > Games > Winning Numbers
2. Ask retailers to print winning numbers of game draws from the terminal.
3. Scan tickets on the self-check scanner or kiosks located at select retailers. >>
4. Watch the televised drawings.  
(where available)
5. Radio station announcements.  
(where available)
6. Local newspapers. (where available)



7. Use the **Iowa Lottery's** mobile app.

- Find it at the **Google Play Store**® and the **Apple App Store**®

• Check your tickets to see if you're a winner and how much you've won. Use the bar code scanner under the "CHECK TICKETS" menu item.

## OTHER APP FEATURES

- View all game types, review winning numbers and jackpots.
- Find an Iowa Lottery retailer close to you.
- Scan eligible tickets to enter them into your VIP Club account for Play It Again™ promotions.
- Use the "ePLAYSLIP" feature to design a ticket for your favorite Iowa Lottery lotto game.

▫ Pick your favorite numbers or tap the randomize button to use the numbers generator.

▫ Save your play to generate a bar code that you can scan at any lottery retailer when you're ready to purchase your ticket.

**DISCLAIMER:** Players are responsible for checking the accuracy of tickets before leaving the store and for determining whether or not a ticket is a winner. If you believe you have won and the terminal rejects, or a retailer disputes the validity of your prize claim, you may submit your claim directly to the Iowa Lottery for review. Sign the ticket before claiming. A parent or guardian must also sign the ticket for any claimant who is a minor. *Iowa law prohibits the sale of lottery tickets to anyone under 21 years of age.*

## CLAIM DEADLINES

- Powerball®, Mega Millions®, Lotto America® and Millionaire for Life™: **180 days** from draw date.
- Pick 3 and Pick 4: **90 days** from draw date.
- InstaPlay: **90 days** from the date of purchase.
- Scratch and Pull-tab games: **90 days of the official game end date** for that specific game.

## CLAIMING PRIZES

- Prizes up to \$600 for lotto, scratch or InstaPlay games may be redeemed at **any Iowa Lottery retail location** if sufficient funds are available.
- Pull-tab game prizes of up to \$600 must be redeemed at the **same retail location** where the ticket was purchased.
- Prizes of over \$600 may be claimed at any Iowa Lottery office or by mail. However, please note that all prizes of **more than \$250,000**, as well as some special merchandise prizes, must be claimed in person at the Iowa Lottery headquarters office in Clive.

## HOW TO CLAIM A PRIZE BY MAIL

1. Complete the name and address information on the back of your ticket and sign.
  - A parent or guardian must also sign the ticket for any claimant who is a minor.
2. Prizes of \$100 or more, complete a copy of our Winner Claim Form and Federal Tax Form W-9.
  - Prizes of more than \$600, those two (2) forms are required, plus a legible copy of the winner's valid government-issued photo ID. *Acceptable examples include driver's license, state ID, military ID, passport or permanent resident card.*
3. Mail to (registered mail may be appropriate):

**Iowa Lottery**  
**13001 University Ave.**  
**Clive, IA 50325**

And always  
**Sign** your  
winning ticket!

# PLEASE PLAY *Responsibly*

At the Iowa Lottery, we've offered fun and entertainment since 1985 and are committed to helping our players participate responsibly.

If gambling becomes more than just a game for you or a loved one, help is available.

## PROBLEM GAMBLING AWARENESS

The Iowa Lottery provides numerous reminders to the public about responsible play and how to find help if you or someone you know is being impacted by problem gambling. This happens throughout the year and also during **Problem Gambling Awareness Month** in March.

1-800-BETSOFF messages are printed on the back of every lottery ticket sold in Iowa, stickers are placed on lottery machines around the state, and information is available at [ialottery.com](http://ialottery.com).

## CHECK IN WITH YOURSELF

### During the past 12 months:

1. Have you become restless, irritable or anxious when trying to stop/cut down on gambling?
2. Have you tried to keep your family or friends from knowing how much you've gambled?
3. Do you have financial trouble as a result of your gambling that you've had to get help with living expenses from family, friends or welfare?

If you answered "yes" to any of these questions, you may be at risk for developing a gambling disorder.

## OTHER SIGNS OF GAMBLING DISORDERS

- Gambling escalates to risky behavior to maintain a higher level of excitement
- Can't quit while ahead
- Gambling longer than you intended
- Bet "over your head" and then "chase" losses
- Miss work or other commitments because of gambling

## YOU CAN HELP OTHERS WHO HAVE A GAMBLING DISORDER

- **Encourage** them to get help
- Offer to **attend meetings** with them
- Take over their **finances**
- **Confront** the situation
- **Do NOT** deny the problem
- **Do NOT** bail them out
- **Do NOT** make excuses or enable them
- **Do NOT** blame yourself

## BETS OFF

Each year, the lottery provides the public with information about 1-800-BETSOFF, the helpline of the Iowa Problem Gambling Services, by including messages about the helpline on millions of lottery tickets, brochures, point-of-sale materials and other publications.

Through the years, we have also provided more than \$15.7 million to the Iowa Gambling Treatment Fund. The Gambling Treatment Program now receives its funding from the state General Fund.

To learn more about the Iowa Problem Gambling Services, visit [yourlifeiowa.org/gambling](http://yourlifeiowa.org/gambling).

If you or someone you know has a gambling problem, call 1-800-BETSOFF (1-800-238-7633).

## Resources AT A GLANCE

Call 1-800-BETSOFF

Visit  
[yourlifeiowa.org/gambling](http://yourlifeiowa.org/gambling)

Sign up for texts:  
[yourlifeiowa.support](http://yourlifeiowa.support)

Enroll in the lottery's  
statewide voluntary  
self-exclusion program

# Contact Us

Open Monday - Friday 8:00 a.m. to 4:00 p.m.  
*Closed for official State of Iowa holidays*

## Main Office Clive

13001 University Ave.  
(515) 725-7900

## Mason City

2900 Fourth St. SW  
(641) 424-6011

## Cedar Rapids

2345 Blairs Ferry Rd. NE  
(319) 395-9313

## Storm Lake

822 Flindt Dr.  
(712) 732-6662

## WINNING NUMBER HOTLINE

(515) 323-4633

  
**Connect  
WITH US!** 



[ialottery.com](http://ialottery.com)



[youtube.com/user/IALottery](https://youtube.com/user/IALottery)



[facebook.com/iowaLottery](https://facebook.com/iowaLottery)



[x.com/ialottery](https://x.com/ialottery)



[instagram.com/iowalottery](https://instagram.com/iowalottery)



[threads.com/@iowalottery](https://threads.com/@iowalottery)

  
**IALottery<sup>®</sup>**  
Woo Hoo for You<sup>®</sup>